



DG Terminals

Liquid Bulk Tank Terminal (Liepaja, Latvia)

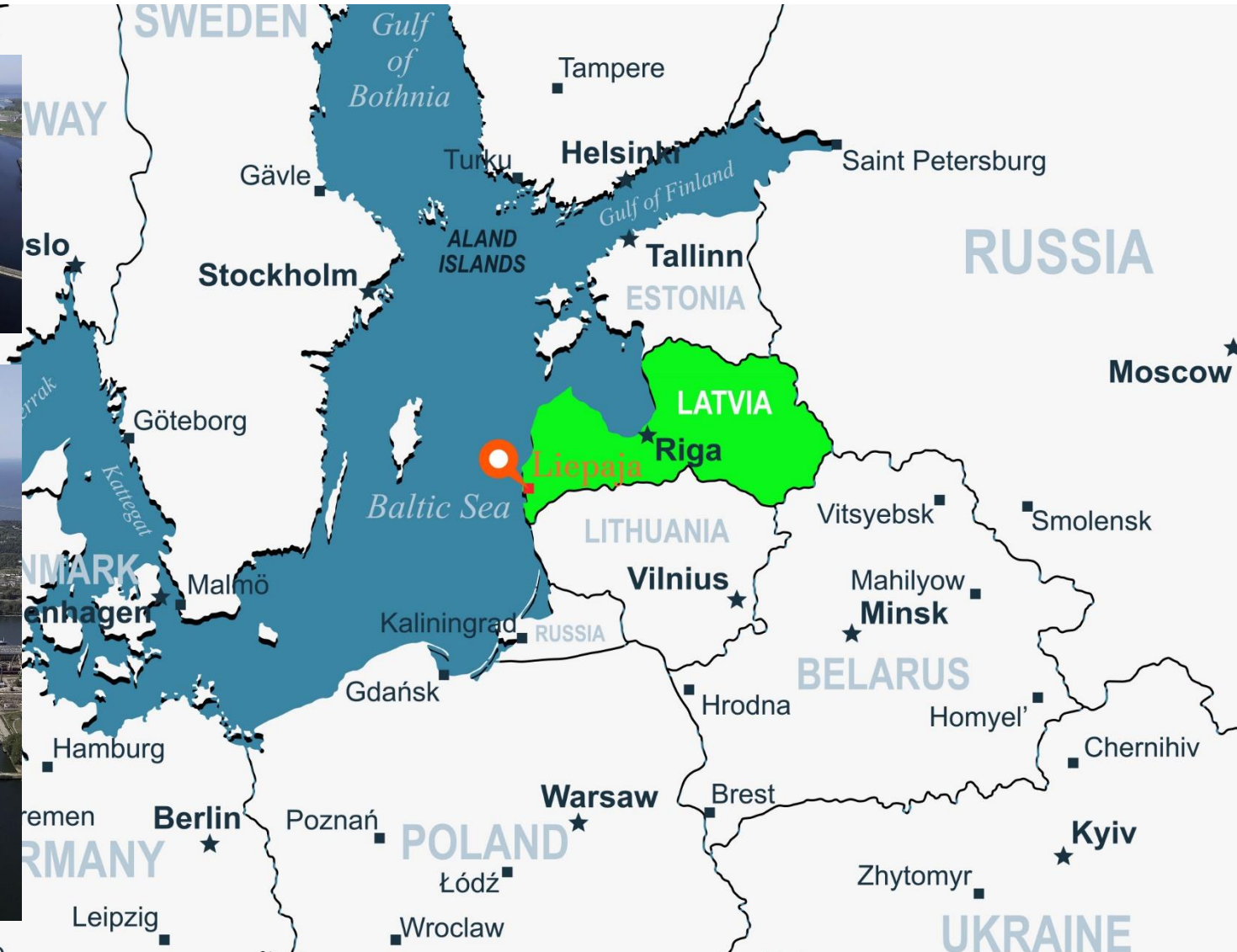




Strategic Location



Liepaja, Latvia





Introduction



DG Terminals

- Fully independent (privately held) liquid bulk tank terminal founded in year 2000.
- Part of Liepaja Special Economic Zone (LSEZ status since 2002) in ice-free port of Liepaja, Latvia.
- A fully licensed EU customs warehouse (since 2004).
- Status of an excise warehouse for the excise duty product groups.
- Handling of products coming from/to: CIS; Baltic States; European Union and other regions.
- Operational all year round 24/7.

Unquestionable Commitment to Quality and Environmental Management Systems:

- GMP+ FSA assured **Storage and transshipment of feed materials;**
- ISO 9001:2015 **Quality Management System** (certified since 2007);
- ISO 14001:2015 **Environmental Management System** (certified since 2004);
- ISO 45001:2018 **Occupational health and safety management systems;**
- ISO 50001:2018 **Energy Management System** (certified since 2020);
- ISO/IEC 17025:2005 **Laboratory** (testing – accredited since 2013).



Beyond sustainable operations and towards a completely energy neutral logistics hub

Apart from our full commitment to Quality and Environmental Management Systems the terminal is rapidly approaching a completely **energy neutral logistics hub status** by:

- Employing a photovoltaic on-site power station and
- Transitioning away from natural gas heating
- Planning of further off-site photovoltaic power station development projects





Key Services

DG Terminals



- Transshipment and storage of agricultural products, crude oil and crude oil products, petrochemical products and others (including all types of heated products);
- Product blending (and additive blending) in vessel/ in tank;
- Testing of products (analysis and sampling);
- Water, salt and sediment separation; product drying (water removal);
- Product Barrelling; cargo forwarding (also by rail); customs services (clearing of cargoes), bunkering; ship agency services; and others.





Key Products

DG Terminals



Transshipment and storage of vegetable oils; feedstock; crude oil and crude oil products, petrochemical products and others (including all types of heated products);

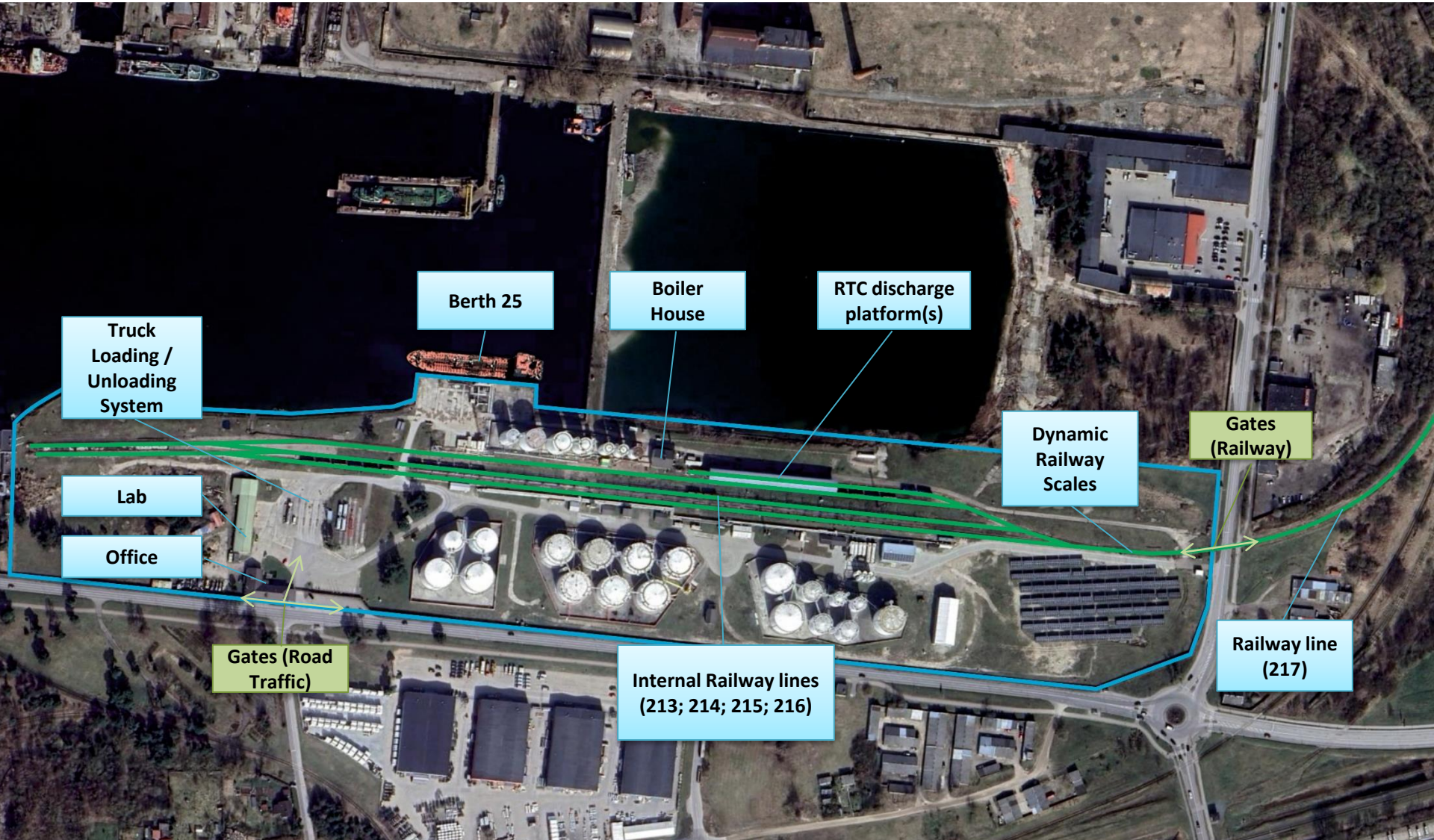
- Vegetable oils (rapeseed oil, sunflower oil, linseed oil (flaxseed oil), soybean oil, etc.);
- Bio products and other agricultural products including liquid fertilizers (molasses, biodiesel, bioethanol, etc.);
- Crude oil and crude oil products (base oils, bitumen, wax, petrolatum, heavy fuel oil, petrol, diesel, cumene, crude benzene, etc.);
- Chemical products (coal benzene, coal tar, methyl-ethyl-ketone (MEK), etc.);
- And many others including specialised/certified products (GMP+, Kosher, etc.)





Layout of the Terminal

DG Terminals





Infrastructure Overview



DG Terminals

A highly flexible interchange hub between sea transport/ railway / road / shore tank storage:

- Transshipment from/to (any combination): vessels, railway cars, tank-trucks, flexi-tanks, containers, shore-tanks;
- Cargo handling speeds: up to 300 - 800 m³/per hour (depending on product);
- Product heating system through heat exchangers (powered by a pair of 4 MW natural gas boilers and/or electric thermal fluid heaters);
- Product heating with electric railcar heaters
- Product heating with 1.1 MW and 2 MW Steam generation system (powered by 4 MW thermal oil boiler);
- A back-up fuel oil burner available (for a 4 MW boiler);
- Steel, polyethylene, aluminium pipelines;
- Pipeline flushing system by:
 - compressed air,
 - nitrogen (available for designated products);
- Vapour control/recovery system available (depending on product):
 - vapour cooling,
 - vapour scrubber (with activated carbon);
- Double grid electricity connection (650 kW and 400kW) and emergency back up generator system.





Berth 25

DG Terminals



	BERTH	TANKER
Length (m)	89.5	140
Depth (m)	8 (expected to be deepened)	
Width (m)		25
Draft (m)		6.8
DW (t)		16,000



- Operational all year-round (ice-free port) 24/7.
- Crude oil can be loaded to vessels with capacity up to 9,000 metric tons (depending on port conditions and vessel design).
- Vessels serviced by *LatShipping* agency.



Road and Railway

DG Terminals



Road

- Handling of tank-trucks, flexi-tanks, containers;
- Loading/unloading system can handle up to 18 simultaneously connected trucks;
- Product barrelling is available;
- Fully certified truck scale system in operation 24/7.

Railroad

- Transshipment platforms allow simultaneous handling of 42 oil product and 14 chemical product railway wagons including handling of containers (from railroad carrier platforms);
- Privately owned 4 railroad lines with loading/unloading stations and access railroad to public railway system (total length more than 3km);
- Total railway wagon capacity in the terminal's territory: 150 railcars;
- Dynamic and static railway scales systems are available.





Storage Capacity

DG Terminals



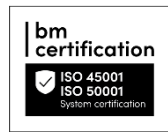
- Fully segregated storage by products and clients (no co-mingling);
- Shore tanks – from 100 m³ to 5,000 m³ (nominal capacity);
- Total capacity ~ 95,000 m³ ;
- Insulated storage tanks available (depending on product type);
- Heated storage tanks available (depending on product type);
- Shore tanks with agitators (product in-shore tank blending) available (depending on product type).





Accredited Laboratory

DG Terminals



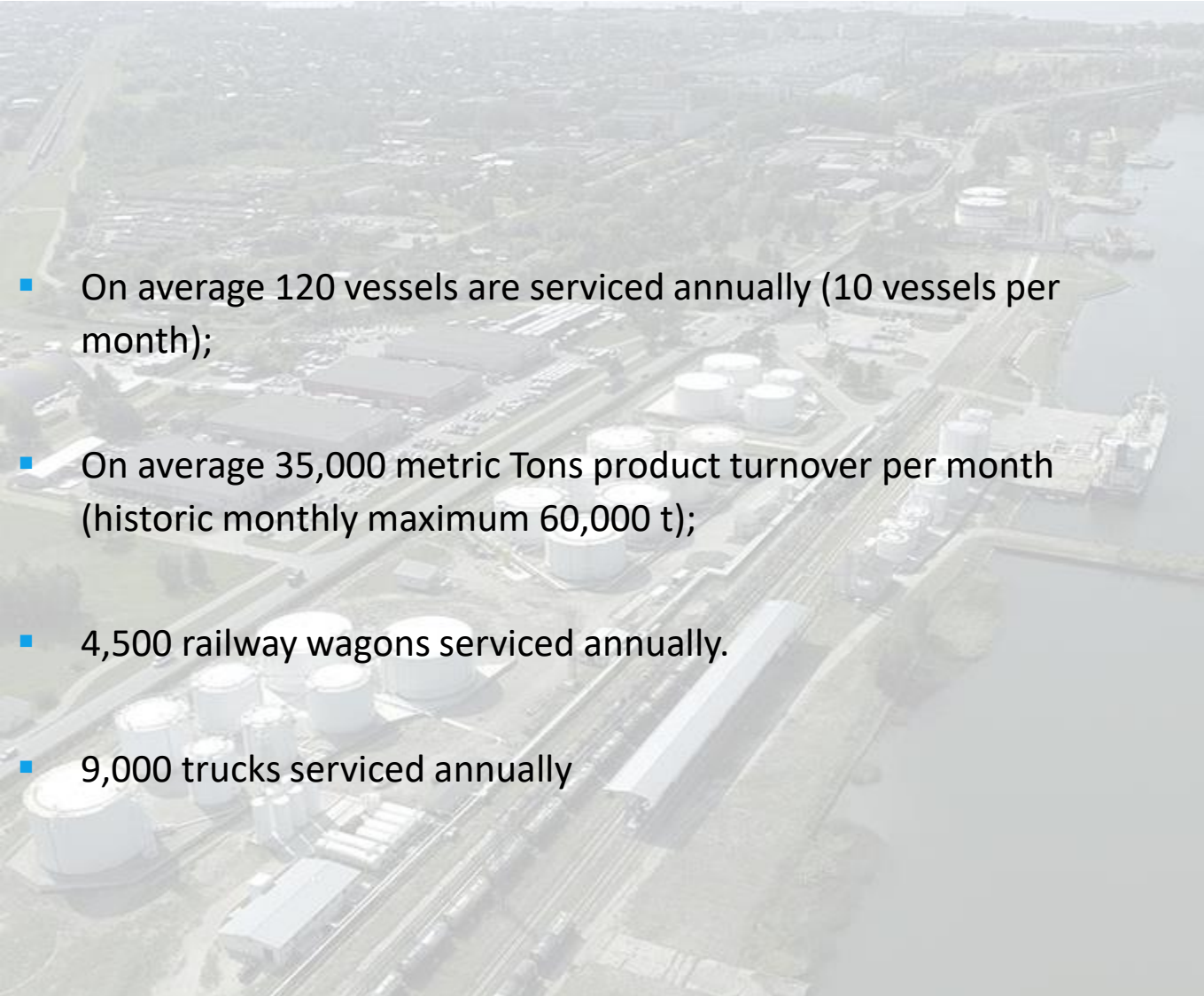
- One of the most sophisticated liquid bulk terminal laboratory in Latvia
- Accredited according to LVS EN ISO/IEC 17025:2005 testing of petroleum products (LATAK-T-485-01-2013).
- Distillation characteristics at atmospheric pressure (ISO 3405);
- Flash Point by Pensky-Martens Closed Cup Tester (ASTM D93);
- Flash and Fire Points by Cleveland Open Cup Tester (ASTM D92);
- Kinematic viscosity and calculation of dynamic viscosity (ISO 3104);
- Sulphur content by Energy Dispersive X-ray Fluorescence Spectrometry (ASTM D4294);
- Water content by Distillation method (ISO 3733);
- Water content by Coulometric Karl Fischer titration method (ISO 12937);
- ASTM Colour of Petroleum Products (ASTM Colour Scale) – (ASTM D1500);
- Density - Hydrometer method (ISO 3675);
- Density - Oscillating U-tube method (ISO 12185);
- Salt content - Electrometric Method (ASTM D3230);
- Colour of Clear Liquids (Platinum-Cobalt Scale) ASTM D1209-05(2011);
- Organic Chloride Content in Crude Oil (ASTM D4929-17) Method A;
- and Others.





Turnover (Statistics)

DG Terminals



- On average 120 vessels are serviced annually (10 vessels per month);
- On average 35,000 metric Tons product turnover per month (historic monthly maximum 60,000 t);
- 4,500 railway wagons serviced annually.
- 9,000 trucks serviced annually



DG Terminals

Liquid Bulk Tank Terminal (Liepaja, Latvia)



Q & A



LSEZ SIA 'DG Terminals'
VAT# LV 40003522112

Pulvera iela 33, Liepaja, LV-3405, Latvia
Tel.: (+371) 6342 4604, (+371) 2800 6699
E-mail: hub@dgterminals.lv





DG Terminals



Site Visit (Safety and Legal Requirements)



Contactless body temperature check might be required.



Use of cameras and phone cameras strictly prohibited!



Safety helmet and other protective equipment must be worn in the territory of the terminal.



No open flames! Smoking allowed only in designated places.



Beware of trains and moving machinery at all times!



Visitor movement in the territory allowed only under DG Terminals employee guidance.



Audio and video surveillance and recording in operation.



In case of an emergency please follow instructions from our personnel.



Customs Area - All visitors must hold a valid photo ID and visitor permit.